

Reservoir flood

Details of the reservoir hazard map are available on the website of Kan-onji City. ▶▶▶

※For a paper reservoir hazard map, ask the Land Improvement Group of the Agriculture, Forestry, and Fishery Section in the Economic Department (0875-23-3932).



Reservoir hazard map

In Kan-onji City, we have prepared a probable flood zone map for disaster prevention, prioritizing agricultural reservoirs (124 reservoirs) in the city, assuming a collapse due to an earthquake. Among them, we have prepared a reservoir hazard map for 39 reservoirs that may cause largescale damage particularly to the downstream. We have published the map for the purpose of using information for voluntary evacuation in the event of a disaster such as the extent of flooding and reaching time of the flood as well as evacuation methods, etc.



- If the bank of a reservoir collapses, the extent of flooding differ from the reservoir hazard map.
- People who live in the probable flood zone shown in the reservoir hazard map need to assume that there is a risk of reservoir floods on a daily basis.
- If you live near the probable flood zone, check for a safe place with the help of the reservoir hazard map.
- Please use it for disaster prevention drills.

Details of the reservoir hazard map are available on the website of Kan-onji City. ▶▶▶



※For a paper reservoir hazard map, ask the Land Improvement Group of the Agriculture, Forestry, and Fishery Section in the Economic Department (0875-23-3932).

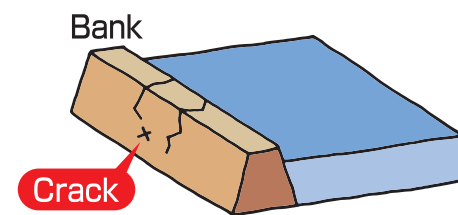
Assuming conditions for creating a map

- ① The earthquake caused the collapse of the reservoir.
- ② At the time of collapse, the reservoir had high water level.
- ③ The ground condition is normal without rainfall.
- ④ The river is flowing at normal flow rates.

How a reservoir collapses and the damage it causes

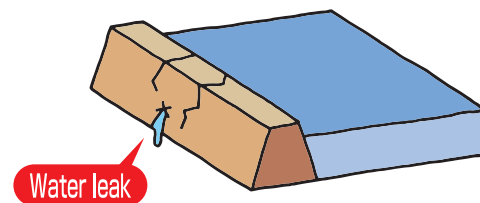
1 The bank is damaged due to an earthquake.

- As with earthquakes, the bank may be damaged during heavy rains.



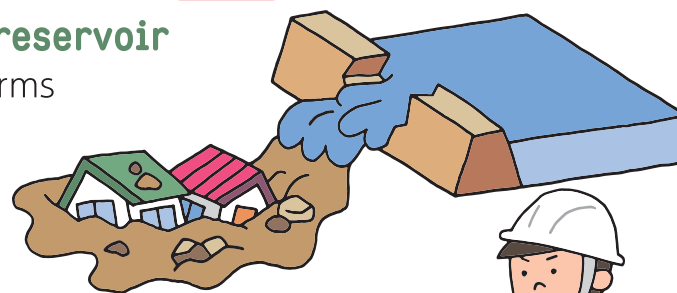
2 Damaged bank collapses because it cannot hold stored water.

- Cracks widen and largescale water leakage begins, and the bank collapses.



3 Damage due to the collapse of the reservoir

- A large amount of water and mud forms a muddy stream and surges instantly.
- Buildings and cars are washed away.
- Roads, residential areas, and fields are buried under mud.



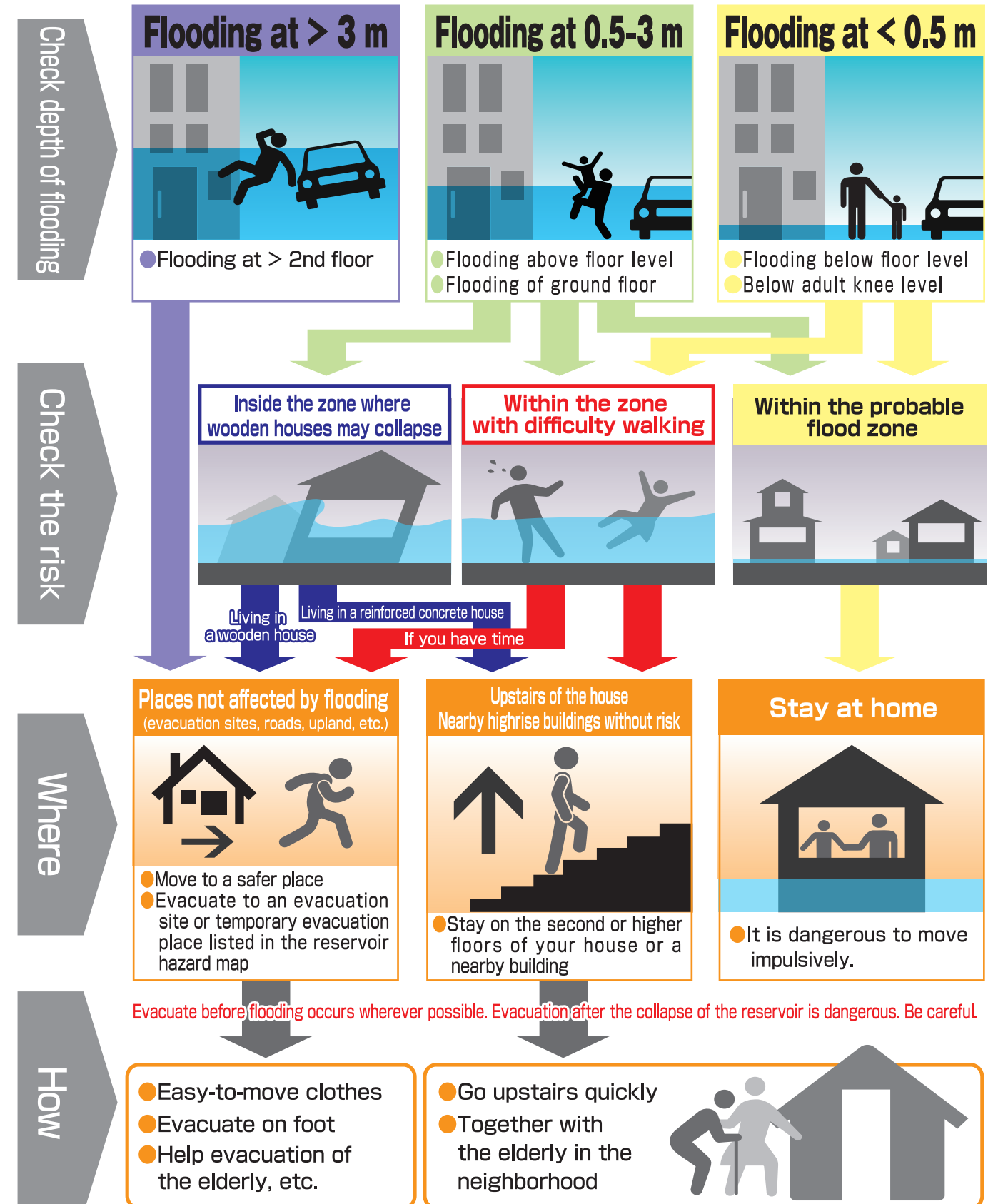
- Cracks appear on the bank.
- Block pitching is broken.
- Water leaks from the bank.

If such phenomena are observed at the reservoir, it may collapse. Evacuate immediately.



Evacuate according to the flooding situation Basic actions to protect your life

Evacuation methods vary depending on the flooding situation. It is important to evacuate according to the situation. Check the reservoir hazard map and discuss possible action during an emergency with your family and the community.



Remain alert for a few days after an earthquake occurs!