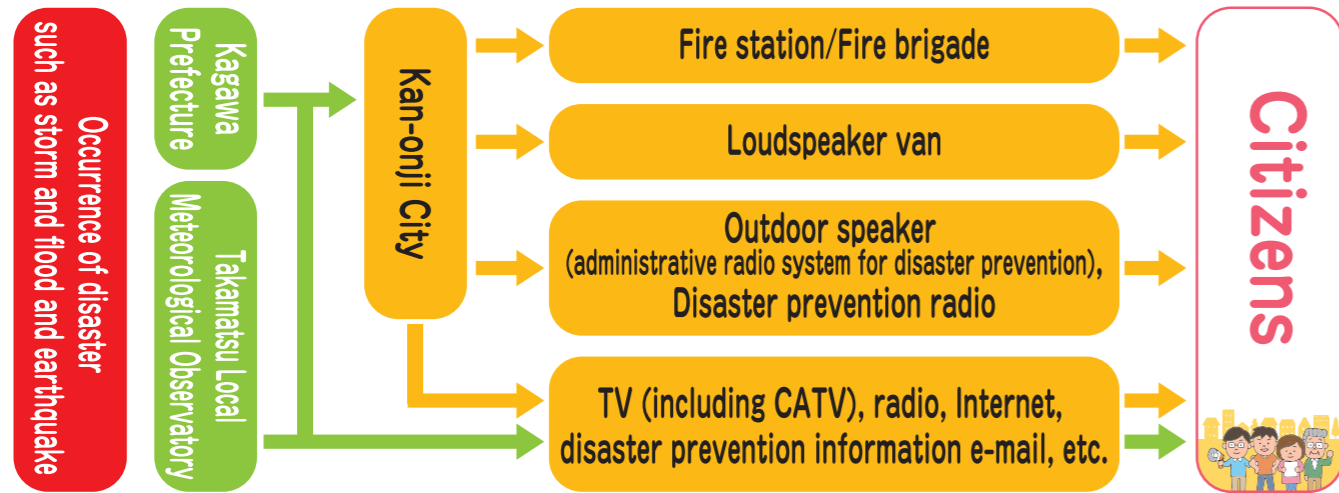
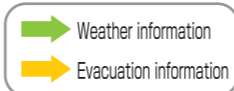


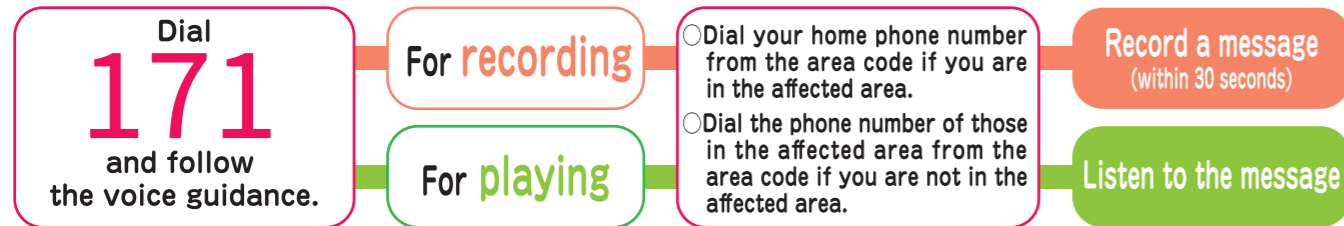
Method of communicating evacuation information



Disaster message dial

In the event of a major disaster, confirm safety using the "disaster message dial."

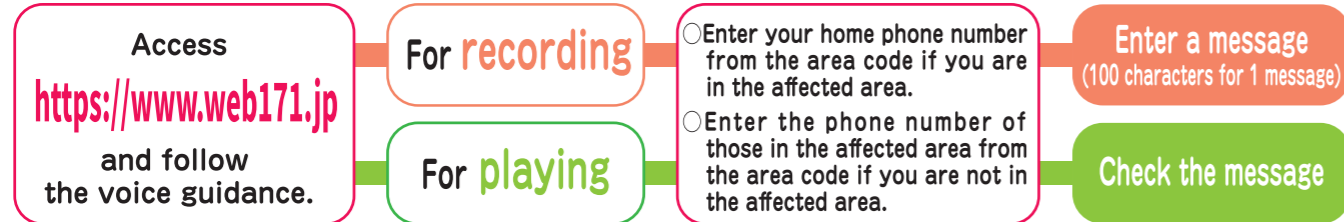
How to use the "disaster message dial (171)" (NTT)



※The message storage period is until the end of provision of the service. The number of accumulated messages and the storage period vary depending on the situation of the disaster.

Disaster message board (web171)

How to use the "disaster message board (web171)" (NTT)



※The message storage period is up to 6 months. All messages will be deleted at the end of the storage period and at the end of operation.
 ※If the number of registered messages exceeds the maximum, the message will be deleted in order from the oldest.

Disaster message board of major mobile phone operators

NTT DOCOMO



<http://dengon.docomo.ne.jp/top.cgi>

au



<http://dengon.ezweb.ne.jp>

Softbank



<http://dengon.softbank.ne.jp>

Web171



<https://www.web171.jp/web171app/topRedirect/>

Legend

- Designated emergency evacuation site
 - Designated evacuation site
 - City hall, etc., police stations and fire stations
 - Medical institution
 - Seismic water storage tank also used for drinking water
 - Fire brigade post
 - Public phone (as of August 2022)
 - Heliport
 - Underpass (passage running under roads and railways when roads and railroads cross at different levels)
 - Administrative boundary
 - Railway (JR)
- Evacuation route, etc.**
- Expressway
 - National road
 - Major local road/prefectural road
 - Other roads

Alert zone based on the Sediment Disasters Prevention Act

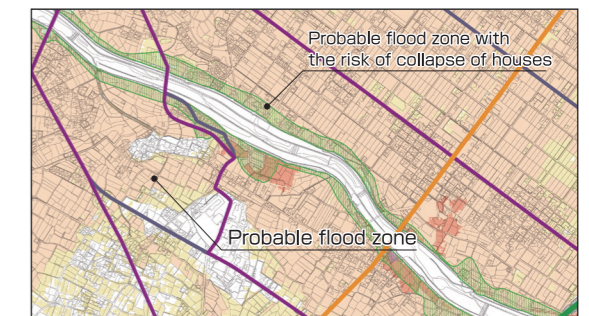
- Landslide special alert zone (collapse of steep slope)
- Landslide alert zone (collapse of steep slope)
- Landslide alert zone (landslide)
- Landslide special alert zone (mudslide)
- Landslide alert zone (mudslide)
- Landslide alert zone (mudslide) (From page 59 to page 66.)

Probable flood zone

Water depth assumed in case of flooding (by rank)

- Zone at > 5.0 m
- Zone at 3.0 m - < 5.0 m
- Zone at 0.5 m - < 3.0 m
- Zone at < 0.5 m

Probable flood zone with the risk of collapse of houses (flood flow and river bank erosion)



Probable high tide flood zone

Water depth assumed in case of flooding (by rank)

- Zone at > 5.0 m
- Zone at 3.0 m - < 5.0 m
- Zone at 0.5 m - < 3.0 m
- Zone at < 0.5 m

Flood in the past

- High tide flood zone
- Heavy rain flood zone

