

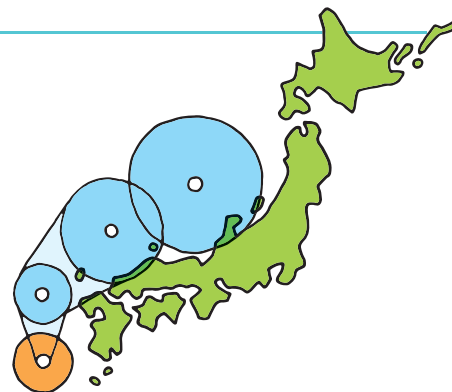
Inland flood

Occurrence of heavy rain

Heavy rains due to seasonal rain front, autumn rain front, etc.



Heavy rains due to typhoons



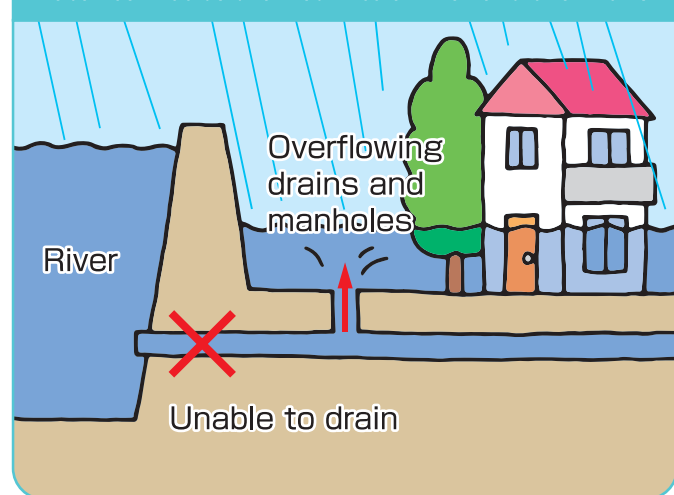
Heavy rain due to thunderstorm clouds



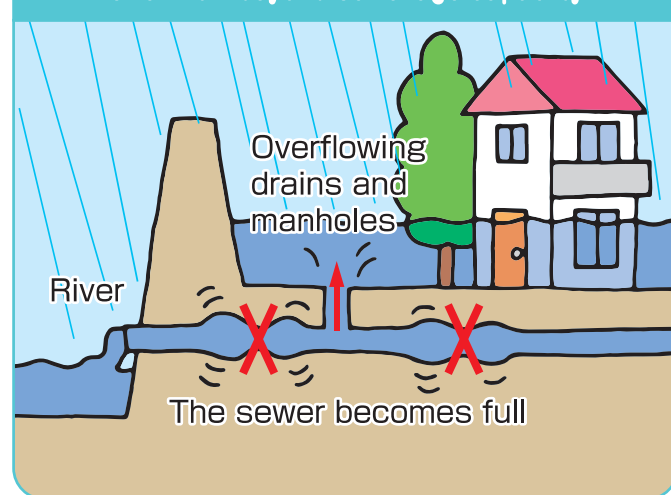
Occurrence of inland flood

There are "overflowing type (left)" in which city buildings, land, roads, etc. are flooded because heavy rains increase the water level of rivers in a short period of time and rainwater does not flow into the river and "flooding type (right panel)" in which the rain on the street flows into drainage channels and sewers in a short period of time, which exceeds the rainwater treatment capacity. It is necessary to be careful because inland floods may occur in areas far from the river.

Water cannot be drained into a river and overflows.



Overflow beyond sewerage capacity



If inland flood occurs

Evacuate vertically without trying to do too much.

In areas affected by floods, it becomes difficult to walk due to the rapid flow of water even if it is shallow. Furthermore there is a risk of falling because the manhole or water channel cannot be detected. It is very dangerous particularly at night since it is difficult to see the surrounding areas.

Evacuate to indoor places that are at a higher level such as the second floor of your home or a nearby building depending on the situation. Determine a place to evacuate by checking regularly.

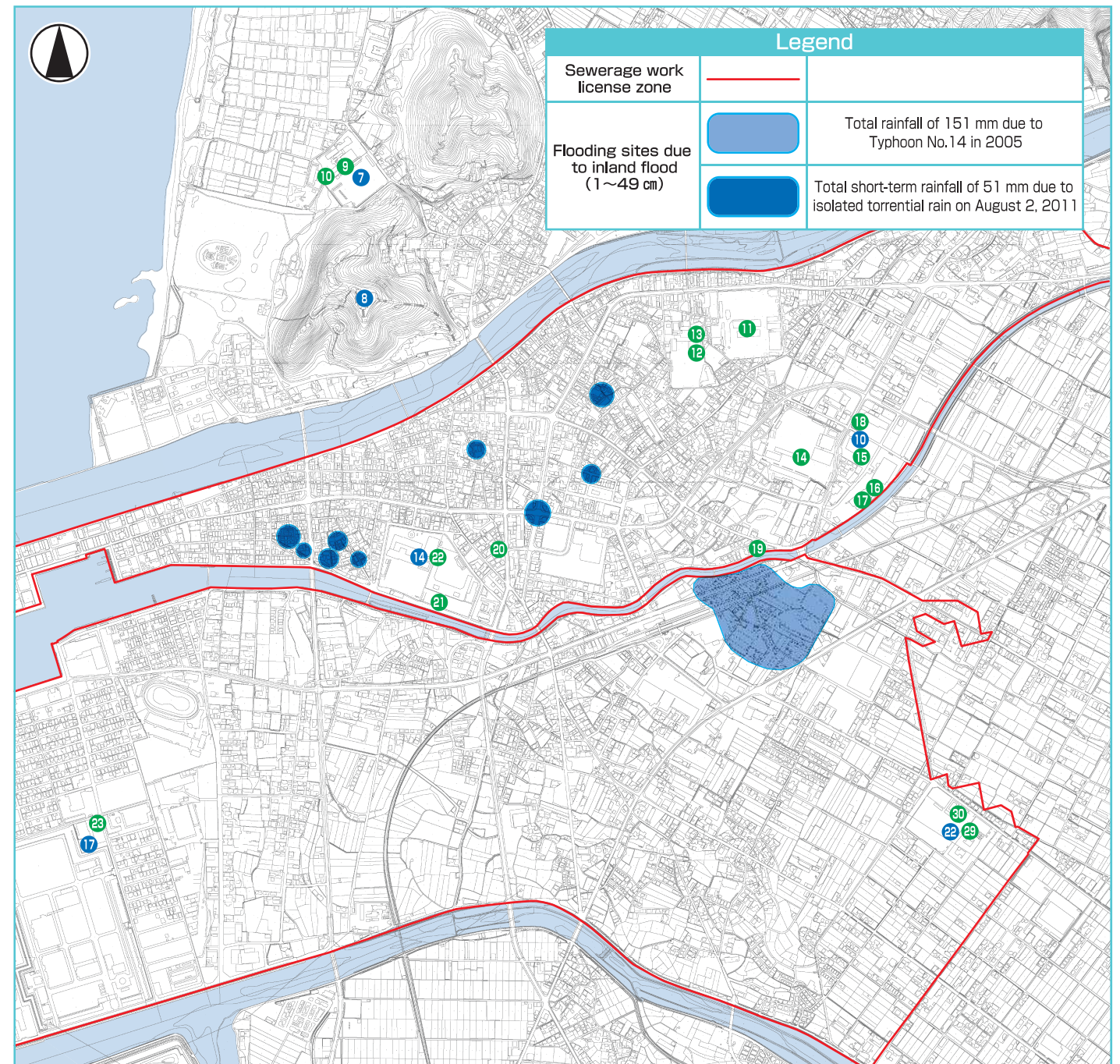


Move valuables to high places.

Move PC and electrical appliances that are sensitive to water, valuables, flashlights, shoes, and emergency bags that are necessary for evacuation.



Hazard map showing the past inland flood in Kan-onji City



No. Designated emergency evacuation site

Number	Name (designation of site)
7	観音寺中学校 (体育館・運動場・武道場)
8	琴弾山(十王堂前、参道階段、本殿前、山頂展望台)
10	観音寺商工会議所 (3階ホール及び大ホール)
14	観音寺小学校 (校舎2階以上)
17	(株)総合開発リネンサプライ事業部 (事務所2階会議室、産業リネン工場部分2階)
22	中部中学校 (体育館、運動場、武道場)

No. Designated evacuation site

Number	Name (designation of site)
9	観音寺中学校 (体育館)
10	観音寺中学校 (武道場)
11	観音寺第一高等学校
12	観音寺東公民館体育館
13	観音寺東公民館
14	観音寺総合高等学校
15	観音寺中央図書館
16	共同福祉施設
17	働く婦人の家

Number	Name (designation of site)
18	観音寺商工会議所
19	ふれあい文化センター
20	観音寺南公民館
21	観音寺こども園
22	観音寺小学校 (体育館)
23	(株)総合開発リネンサプライ事業部
29	中部中学校 (体育館)
30	中部中学校 (武道場)