

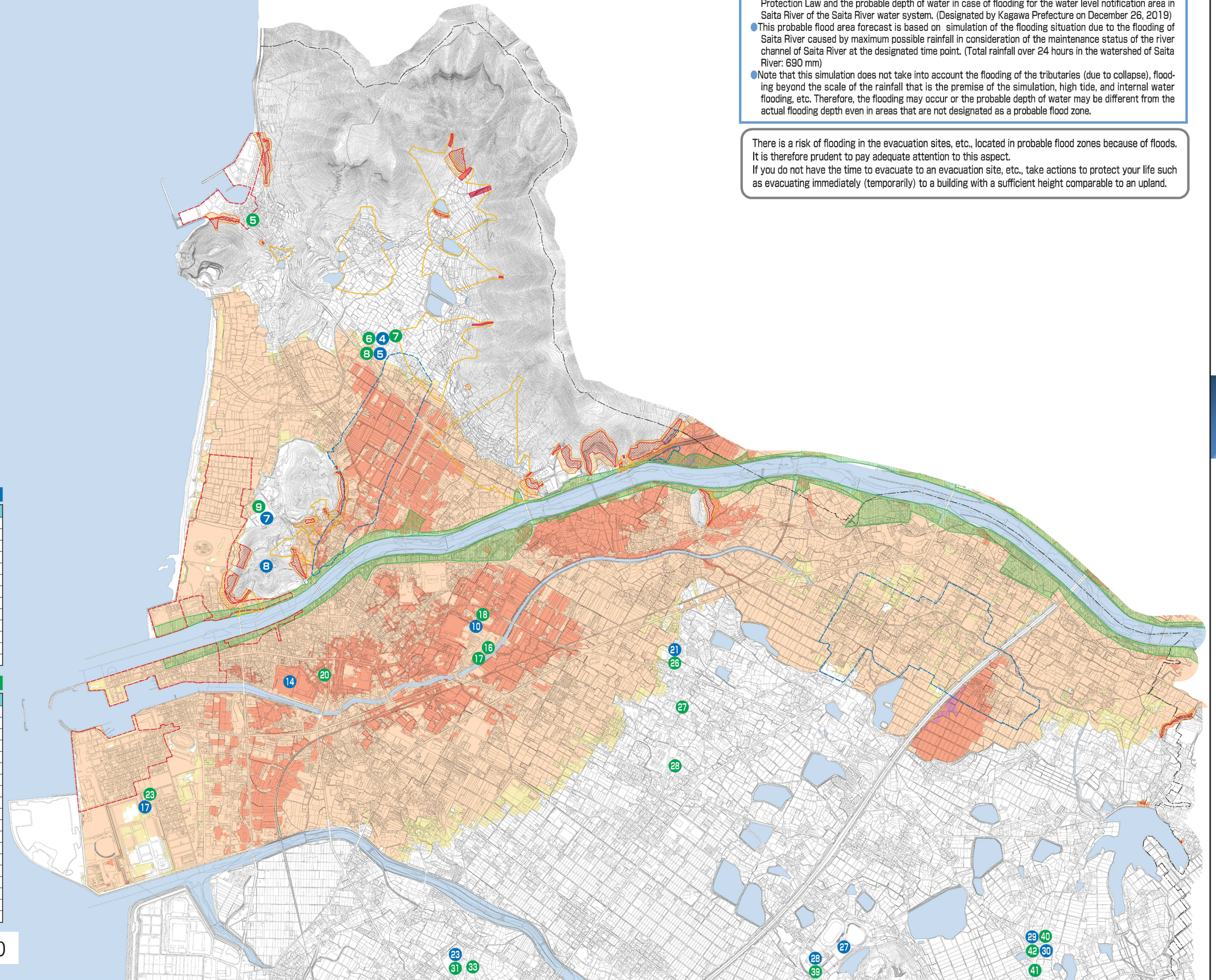
Saita River probable flood zone (maximum scale)



About Saita River probable flood zone (simulation method by Kagawa Prefecture)

- This drawing illustrates the probable flood zone with the largest possible rainfall as specified by the Water Protection Law and the probable depth of water in case of flooding for the water level notification area in Saita River of the Saita River water system. (Designated by Kagawa Prefecture on December 26, 2019)
- This probable flood area forecast is based on simulation of the flooding situation due to the flooding of Saita River caused by maximum possible rainfall in consideration of the maintenance status of the river channel of Saita River at the designated time point. (Total rainfall over 24 hours in the watershed of Saita River: 690 mm)
- Note that this simulation does not take into account the flooding of the tributaries (due to collapse), flooding beyond the scale of the rainfall that is the premise of the simulation, high tide, and internal water flooding, etc. Therefore, the flooding may occur or the probable depth of water may be different from the actual flooding depth even in areas that are not designated as a probable flood zone.

There is a risk of flooding in the evacuation sites, etc., located in probable flood zones because of floods. It is therefore prudent to pay adequate attention to this aspect. If you do not have the time to evacuate to an evacuation site, etc., take actions to protect your life such as evacuating immediately (temporarily) to a building with a sufficient height comparable to an upland.



Designated emergency evacuation site

Number	Name (designation of site)	Landside	Saita River Flood
4	高室小学校(体育館、運動場)	○	○
5	高室公民館	○	○
7	観音寺中学校(体育館、運動場、武道場)	○	○
8	琴弾山	○	○
10	観音寺商工会議所(3階ホール及び大ホール)	○	○
14	観音寺小学校(校舎2階以上)	○	○
17	(株)総合開発リネンサプライ事業部(事務所2階会議室、産業リネン工場部分2階)	○	○
21	常盤小学校(体育館、運動場)	○	○
23	柞田小学校(体育館、運動場)	○	○
27	総合運動公園	○	○
28	市立総合体育館	○	○
29	豊田公民館	○	○
30	豊田小学校(体育館、運動場)	○	○

Designated evacuation site

Number	Name (designation of site)	Landside	Saita River Flood
5	室本公民館	○	○
6	高室小学校(体育館)	○	○
7	旧高室幼稚園	○	○
8	高室公民館	○	○
9	観音寺中学校(体育館)	○	○
16	共同福祉施設	○	○
17	働く婦人の家	○	○
18	観音寺商工会議所	○	○
20	観音寺南公民館	○	○
23	(株)総合開発リネンサプライ事業部	○	○
25	常盤小学校(体育館)	○	○
27	常盤公民館	○	○
28	観音寺中部こども園	○	○
31	柞田小学校(体育館)	○	○
33	柞田公民館	○	○
39	市立総合体育館	○	○
40	豊田公民館	○	○
41	笑いの家とよた	○	○
42	豊田小学校(体育館)	○	○

